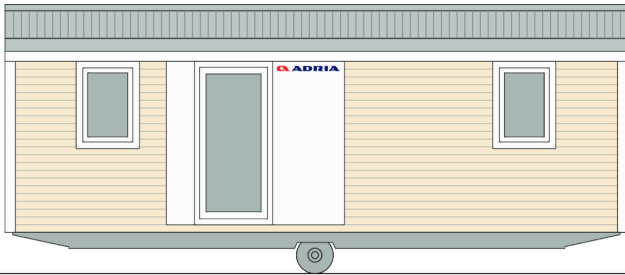
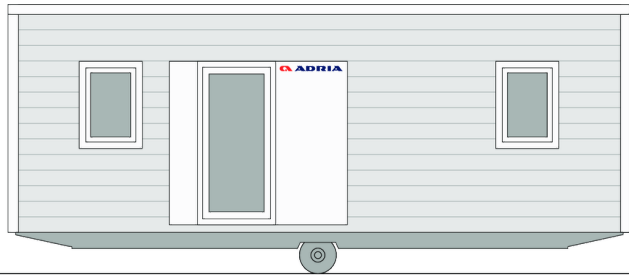


# Sline 803 C21

**Facade:**



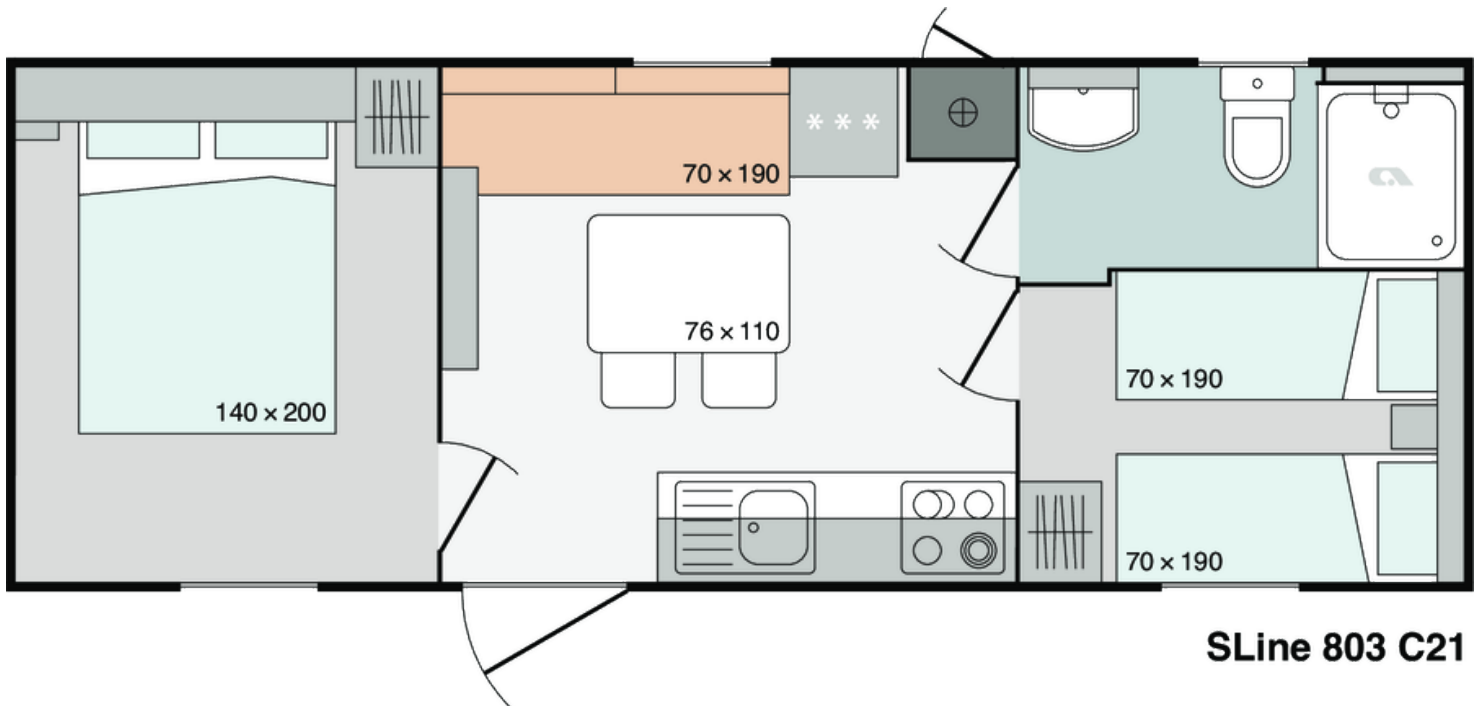
**Facade 2:**



SLine 803 C21

SLine 803 C21

**Layout:**



**SLine 803 C21**

**A1 GENERAL**

|                     |       |
|---------------------|-------|
| Area                | 24,00 |
| Number of beds      | 4+1   |
| Number of bedrooms  | 2     |
| Number of bathrooms | 1     |
| Length              | 8,00  |
| Width               | 3,00  |
| Height              | 3,30  |

**B1 CHASSIS**

|                               |   |
|-------------------------------|---|
| 100% Galvanized Steel Chassis | X |
| Single inflatable wheels      | X |
| Detachble hook                | X |
| Leveling Feet                 | X |

**B2 FLOOR**

|   |   |
|---|---|
| Vynil flooring                          | X |
| Moisture resistant CTB-H flooring 19 mm | X |
| Floor insulation aluminium foil         | X |
| Adria Sandwich Technology ® Floor 40 mm | O |

**B3 EXTERIOR WALLS**

|  |   |
|--|---|
| Piva Sandwich Technology ®PST: Cream sandgrain       | X |
| Piva Sandwich Technology ®PST: White woodgrain       | O |
| Frontal Facade: Larchwood vertical                   | O |
| Frontal Facade: Larchwood horizontal                 | O |
| Frontal facade: Soft PVC Vnyl Silver Cedar vertical  | O |
| Frontal Facade: Hard PVC Grey Wood ISO20 horizontal  | O |
| Frontal Facade: Hard PVC White Wood ISO20 horizontal | O |
| Frontal Facade: Facade VANILLA Jub Family 325        | O |
| Frontal Facade: Facade GREEN Jub Vitality 115        | O |
| Frontal Facade: Facade BROWN GREY Jub Family 15      | O |
| Frontal Facade: Facade BLUE Jub Vitality 20          | O |
| Decorative Cladding: White Panel                     | X |
| Cladding: Soft PVC Vnyl Silver Cedar vertical        | O |

|   |   |
|---|---|
| Cladding: Hard PVC White wood ISO20 horizontal      | O |
| Cladding: Hard PVC Grey Wood ISO20 horizontal       | O |
| Cladding: Classic PVC White FS-201 horizontal       | O |
| Cladding: Classic PVC Claystone FS-201 horizontal   | O |
| Cladding: Classic PVC Silver Grey FS-201 horizontal | O |
| Cladding: Classic PVC Anthracite FS-201 horizontal  | O |
| Cladding: Classic PVC Light Grey FS-201 horizontal  | O |
| Cladding: Facade WHITE Jub Peace 45                 | O |
| Cladding: Facade VANILLA Jub Family 325             | O |
| Cladding: Facade GREEN Jub Vitality 115             | O |
| Cladding: Facade BLUE Jub Vitality 20               | O |
| Cladding: Facade BROWN GREY Jub Family 15           | O |
| Cladding: Larchwood Vertical                        | O |
| Cladding: Larchwood Horizontal                      | O |
| Corners: White                                      | X |
| Corners: Color of cladding                          | O |

#### **B4 WINDOWS AND DOORS**

|   |   |
|---|---|
| PVC white windows and doors with termopan glass | X |
| Tinted windows in bathrooms                     | X |
| Swing entrance door with security glass         | X |
| Door holder                                     | X |
| Mosquito nets on all windows - white            | O |
| Built-in blinds on all windows                  | O |
| Master cylinder                                 | O |
| Master key                                      | O |
| ALU door of external box                        | X |

#### **B5 ROOF AND CEILING**

|  |   |
|--|---|
| Single-pitched Roof                                | X |
| Roof construction class A (150 kg/m <sup>2</sup> ) | X |
| Roof construction class B (250 kg/m <sup>2</sup> ) | O |
| Galvanized steel roof                              | X |
| Roof colour: White                                 | O |
| Roof Colour: Anthracite                            | X |

|   |   |
|---|---|
| Roof Colour: Red  | O |
| PVC foil  | X |
| Roof insulation glass wool 50 mm with                         | X |
| Roof insulation glass wool 100 mm with                        | O |
| Cathedral ceiling in living room and flat roof in other rooms | X |
| Gutters   | X |
| Vertical draining pipes                                       | O |

### C0 INTERIOR

|  |            |
|--|------------|
| Textile Combination - STANDARD           | PEARL 2021 |
| Textile Combination - OPTION 1           | OCEAN 2021 |
| Furnishing Decor                         | STYLE      |
| Dimout curtains                          | X          |
| Daily curtains                           | O          |
| Interior separation walls 16 mm          | X          |
| Interior doors 25 mm with PVC doorframes | X          |
| Door stopper                             | X          |
| Metal doorhooks                          | X          |

### C1 LIVING ROOM

|                               |   |
|-------------------------------|---|
| Sofa                          | X |
| Sofa extendable               | O |
| Foldable table                | X |
| Chairs                        | X |
| Wall shelf over the sofa      | X |
| Wall decoartiv cladding       | X |
| Decorativ wall in living room | X |
| Hangers                       | X |
| Mirror                        | O |
| Fire extinguisher             | O |
| Fire blanket                  | O |
| Smoke detector                | O |

### C2 KITCHEN

|                                 |   |
|---------------------------------|---|
| Gas hob with 4 burners          | X |
| Glas ceramic hob with 4 burners | O |

|  |   |
|--|---|
| Induction hob with 4 burners               | O |
| Built-in extractor hood                    | X |
| Stainless steel sink with drainer          | X |
| Selfstanding grey fridge with freezer 217l | X |
| Built-in dishwasher 450 mm                 | O |
| Microwave oven                             | O |
| Built-in drainer (scolapiatti)             | O |
| Kitchen backsplash: Glass white wall panel | X |
| Kitchen backsplash: White wall panel       | O |
| Kitchen backsplash: Decorative laminate    | O |

### C3 MASTER BEDROOM

|   |           |
|---|-----------|
| Double bed with slatted bed base        | 140 x 200 |
| Foam mattresses (25 kg/m <sup>2</sup> ) | X         |
| Foam mattresses (35 kg/m <sup>2</sup> ) | O         |
| Topper for mattresses                   | O         |
| Wooden headboard                        | X         |
| Bedside tables                          | X         |
| Wall shelf over the bed                 | X         |
| Cupboards over the bed                  | O         |
| Wardrobe                                | X         |
| Hangers                                 | O         |
| Mirror                                  | O         |
| Safe in master bedroom                  | O         |

### C4 CHILDREN BEDROOM

|                                   |          |
|-----------------------------------|----------|
| Single beds with slatted bed base | 70 x 190 |
| Loft bed                          | O        |
| Foam mattresses PN25              | X        |
| Foam mattresses HR35              | O        |
| Underbed                          | O        |
| Wooden headboard                  | X        |
| Bedside tables                    | X        |
| Wall shelf over the bed           | X        |
| Cupboards over the bed            | O        |

|          |   |
|----------|---|
| Wardrobe | X |
| Hangers  | O |
| Mirror   | O |

### C6 BATHROOM

|  |          |
|--|----------|
| Shower cabin                             | 80 x 100 |
| Shower folding doors with security glass | X        |
| Shower PVC wall                          | X        |
| Shower rail with sliding shower holder   | O        |
| Wash-stand with mixer tap                | X        |
| Mirror with shelf                        | X        |
| Ceramic toilet with toilet seat          | X        |
| PVC toilet tank with saving function     | X        |
| Bidet with mixer tap                     | O        |
| Towel holder                             | X        |
| Toilet roll holder                       | X        |
| Hangers                                  | 1X       |
| Hairdryer                                | O        |

### D1 WATER AND GAS

|   |   |
|---|---|
| External connector to water facilities with | X |
| Connection to central warmwater system      | O |
| Connection to central wastewater system     | O |
| PVC water pipes Speedfit®                   | X |
| Central waste water outlet                  | O |
| Water filter                                | O |
| External access to water heater             | X |
| Gas water heater Vaillant 11l natural push  | X |
| Gas connection in box: Propan/Butan 30 mBar | X |
| External gas connection: Methan             | O |
| Electrical water heater 80l                 | O |

### D2 ELECTRICITY

|   |   |
|---|---|
| Surface mounted installations, sockets and switches | X |
| External connection 32A, 250V, 2P+E                 | X |
| External connection 32A, 400V, 3P+N+E               | O |

|   |   |
|---|---|
| Awning LED light                                  | X |
| External socket                                   | O |
| Built-in ceiling spot LED lights in all rooms     | X |
| Reading LED lights in all rooms                   | X |
| LED lightning in kitchen                          | O |
| Key lock  | O |
| Airco Card  | O |
| Airco sensors for entrance door                   | O |
| Airco sensors for all windows except bathrom      | O |
| TV socket   | X |
| Additional TV and aerial socket in master bedroom | O |
| USB socket  | O |
| UTP socket  | O |
| Preinstallation for Airconditioning               | X |

### D3 MULTIMEDIA

|                                     |   |
|-------------------------------------|---|
| TV holder                           | O |
| TV holder with double fold function | O |
| LED TV 32 inch                      | O |
| Adria Bluetooth sound system        | O |

### D4 HEATING AND COOLING

|  |   |
|--|---|
| Air-conditioning - mono split                              | O |
| Electrical heater in living room                           | O |
| Electrical heater in bedrooms                              | O |
| Electrical towel heater in bathroom                        | O |
| Electrical underfloor heating system Ebecco ® in all rooms | O |
| Insulated water pipes with electrical heating              | O |

### E1 EXTERIOR EQUIPMENT

|         |   |
|---------|---|
| Terrace | O |
|---------|---|



### Legal Notice

The information on this website is provided "as is" and without warranty of any kind, expressed or implied, including (but not limited to) any implied warranties of merchantability and non-infringement of third party rights. While the information provided is believed to be accurate, it may include errors or inaccuracies. In no event shall Adria Home be liable to any person for any special, indirect or consequential damages relating to this material, unless caused by gross negligence or intentional misconduct. The purpose of this website is illustrative. The website may show visuals which may include some elements not belonging to the standard equipment or portray products which may not be available in all markets. Products may change in terms of technical specification and commercial details and in relation to specific regulations. You are advised to always contact your selected Adria representative to obtain all detailed information prior to purchasing.

### Copyright

Copyright © Adria Home Ltd., ?rnatelj, Slovenia 2019-20. All rights reserved. The text, images, graphics, sound files, animation files, video files, and their arrangement on the Adria Home website are all subject to copyright and other intellectual property protection. These objects may not be copied for commercial use or distribution, nor may these objects be modified or reposted to other sites. Adria Home website may contain images whose copyrights are attributable to third parties.



Adria Home Ltd.  
Kanižarica 41, SI-8340 ?rnatelj, Slovenija, Tel: +386 (0) 7 35 69 100, E-mail: info@adria-home.com  
adria-home.com , www.adria-holidays.net

#AdriaHome  
#AdriaGlamping

