



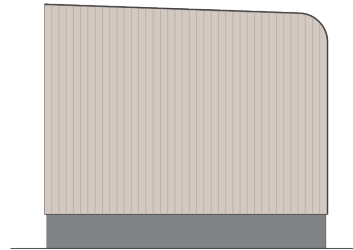
# PHOENIX TWO

**Facade:**



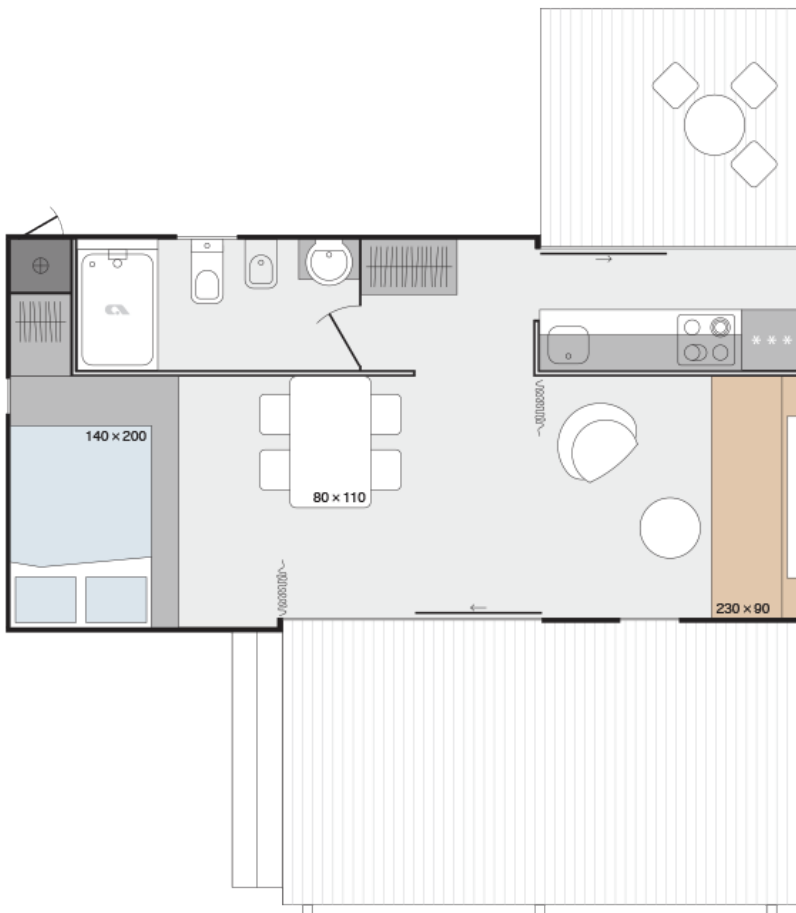
804 Phoenix

**Facade 2:**



804 Phoenix

**Layout:**



804 Phoenix

**A1 GENERAL**

Area	32,00
Number of beds	4+1
Number of bedrooms	2
Number of bathrooms	1
Length	8,00
Width	3,90
Height	3,45

**B1 CHASSIS**

100% Galvanized Steel Chassis	X
Inflatable wheels	X
Detachble hook	X
Leveling Feet	X

**B2 FLOOR**

Vynil flooring	X
Moisture resistant CTB-H flooring 19 mm	X
Floor insulation aluminium foil	X
Adria Sandwich Technology ® Floor 40 mm (R=1,01 m2K/W)	O

**B3 EXTERIOR WALLS**

Adria Sanwdich Technology ®AST external walls (R=1,35 m2K/W)	X
Front Cladding: Compact Anthracite	X
Front Cladding: Larchwood vertical	X
Other Three Sides: Larchwood Vertical	X
Corners: Color of cladding	X

**B4 WINDOWS AND DOORS**

PVC anthracite windows and doors with termopan glass	X
Tinted windows in bathrooms	X
Panoramic sliding entrance door with security glass	X
PVC rolo kitchen door	X
Mosquito nets on all windows - white	O
Master cylinder	O
Master key	O

**PHOENIX TWO**

ALU door of external box	X
--------------------------	---

**B5 ROOF AND CEILING**

Single-pitched Roof	X
Roof construction class A (150 kg/m <sup>2</sup> )	X
Roof Colour: Anthracite	X
PVC roof	X
Decorative roof PVC ribs	X
Flat heigher ceiling in all rooms 240 cm	X

**C0 INTERIOR**

Textile Combination - STANDARD	PHOENIX
Furnishing Decor	PHOENIX
Dimout curtains	X
Cushions in living room	O
Cushions in bedrooms	O
Bedsread in master bedroom	O
Interior separation walls 18mm	X
Interior doors 40 mm with ALU doorframes	X
Door stopper	X
Metal doorhooks	X
Soft close for furniture	X

**C1 LIVING ROOM**

Liftable table	X
Chairs	X, 4X
Open Wardrobe	X
Hangers	X
Mirror	X

**C2 KITCHEN**

Glas ceramic hob with 4 burners	X
Built-in extrator hood	X
Stainless steel sink without drainer	X
Built-in frdige with freezer 270 l	X
Microwave oven	O

**PHOENIX TWO**

Kitchen backsplash: Decorative laminate	X
Hangers	X
Ambiental LED lightning in kitchen	X

**C3 MASTER BEDROOM**

Foldable bed	160 x 200
Foam mattresses (25 kg/m <sup>2</sup> )	X
Foam mattresses (35 kg/m <sup>2</sup> )	O
Wooden headboard	X
Bedside tables	X
Wall shelf over the bed	X
Wardrobe	X

**C4 CHILDREN BEDROOM**

Single beds with slatted bed base	140 x 200
Foam mattresses PN25	X
Foam mattresses HR35	O
Underbed	90 x 190
Upholstered headboard	X
Bedside tables	X
Wall shelf over the bed	X
Wardrobe	X

**C6 BATHROOM**

Shower cabin with low profile tray	80x120
Shower sliding doors with security glass	X
Shower decorative PVC wall	X
Shower rail with adjustable sliding shower holder and rain shower head	X
Wash-stand with mixer tap	X
Mirror with shelf	X
Ceramic toilet with toilet seat	X
Built-in toilet tank with saving function	X
Bidet with mixer tap	O
Toilet roll holder	X
Hangers	X

Hairdryer	O
-----------	---

**D1 WATER AND GAS**

External connector to water facilities with	X
---	---

PVC water pipes Speedfit®	X
---------------------------	---

Central waste water outlet	O
----------------------------	---

Water filter	O
--------------	---

External access to water heater	X
---------------------------------	---

Gas water heater Vaillant 11l natural push	O
--	---

Gas connection in box: Propan/Butan 30 mBar	O
---	---

External gas connection: Methan	O
---------------------------------	---

Electrical water heater 50l	O
-----------------------------	---

Electrical water heater 80l	X
-----------------------------	---

Electrical water heater 100l	O
------------------------------	---

**D2 ELECTRICITY**

White flush mounted installations, sockets and switches	X
---	---

External connector 16A, 250V, 2P+E	O
------------------------------------	---

External connection 16A, 400V, 3P+N+E	X
---------------------------------------	---

External connection 32A, 250V, 2P+E	O
-------------------------------------	---

External connection 32A, 400V, 3P+N+E	O
---------------------------------------	---

Awning LED light	X
------------------	---

External socket anthracite	X
----------------------------	---

Built-in ceiling spot LED lights in all rooms	X
---	---

Reading LED lights in all rooms	X
---------------------------------	---

Ambiental LED lightning in living room and sleeping rooms	X
---	---

Preinstallation for Airconditioning	X
-------------------------------------	---

Key lock	O
----------	---

Airco Card	O
------------	---

Airco sensors for entrance door	O
---------------------------------	---

Airco sensors for all windows except bathrom	O
--	---

TV socket	X
-----------	---

Additional TV and aerial socket in master bedroom	O
---	---

USB socket	X
------------	---

UTP socket	O
------------	---

**D3 MULTIMEDIA**

TV holder	<input type="radio"/>
TV holder with double fold function	<input type="radio"/>
LED TV 32 inch	<input type="radio"/>
Adria Bluetooth sound system	<input type="radio"/>

**D4 HEATING AND COOLING**

Air-conditioning white - mono split	<input type="radio"/>
Electrical heater in living room	<input type="radio"/>
Electrical heater in bedrooms	<input type="radio"/>
Electrical towel heater in bathroom	<input type="radio"/>
Electrical underfloor heating system Ebecco ® in all rooms	<input type="radio"/>
Insulated water pipes with electrical heating	<input type="radio"/>

**E1 OPTION PACKAGES**

Smarthouse package	<input type="radio"/>
--------------------	-----------------------

### Legal Notice

The information on this website is provided "as is" and without warranty of any kind, expressed or implied, including (but not limited to) any implied warranties of merchantability and non-infringement of third party rights. While the information provided is believed to be accurate, it may include errors or inaccuracies. In no event shall Adria Home be liable to any person for any special, indirect or consequential damages relating to this material, unless caused by gross negligence or intentional misconduct. The purpose of this website is illustrative. The website may show visuals which may include some elements not belonging to the standard equipment or portray products which may not be available in all markets. Products may change in terms of technical specification and commercial details and in relation to specific regulations. You are advised to always contact your selected Adria representative to obtain all detailed information prior to purchasing.

### Copyright

Copyright © Adria Home Ltd., ?rnatelj, Slovenia 2019-20. All rights reserved. The text, images, graphics, sound files, animation files, video files, and their arrangement on the Adria Home website are all subject to copyright and other intellectual property protection. These objects may not be copied for commercial use or distribution, nor may these objects be modified or reposted to other sites. Adria Home website may contain images whose copyrights are attributable to third parties.



Adria Home Ltd.  
Kanižarica 41, SI-8340 ?rnatelj, Slovenija, Tel: +386 (0) 7 35 69 100, E-mail: info@adria-home.com  
adria-home.com , www.adria-holidays.net

#AdriaHome  
#AdriaGlamping

